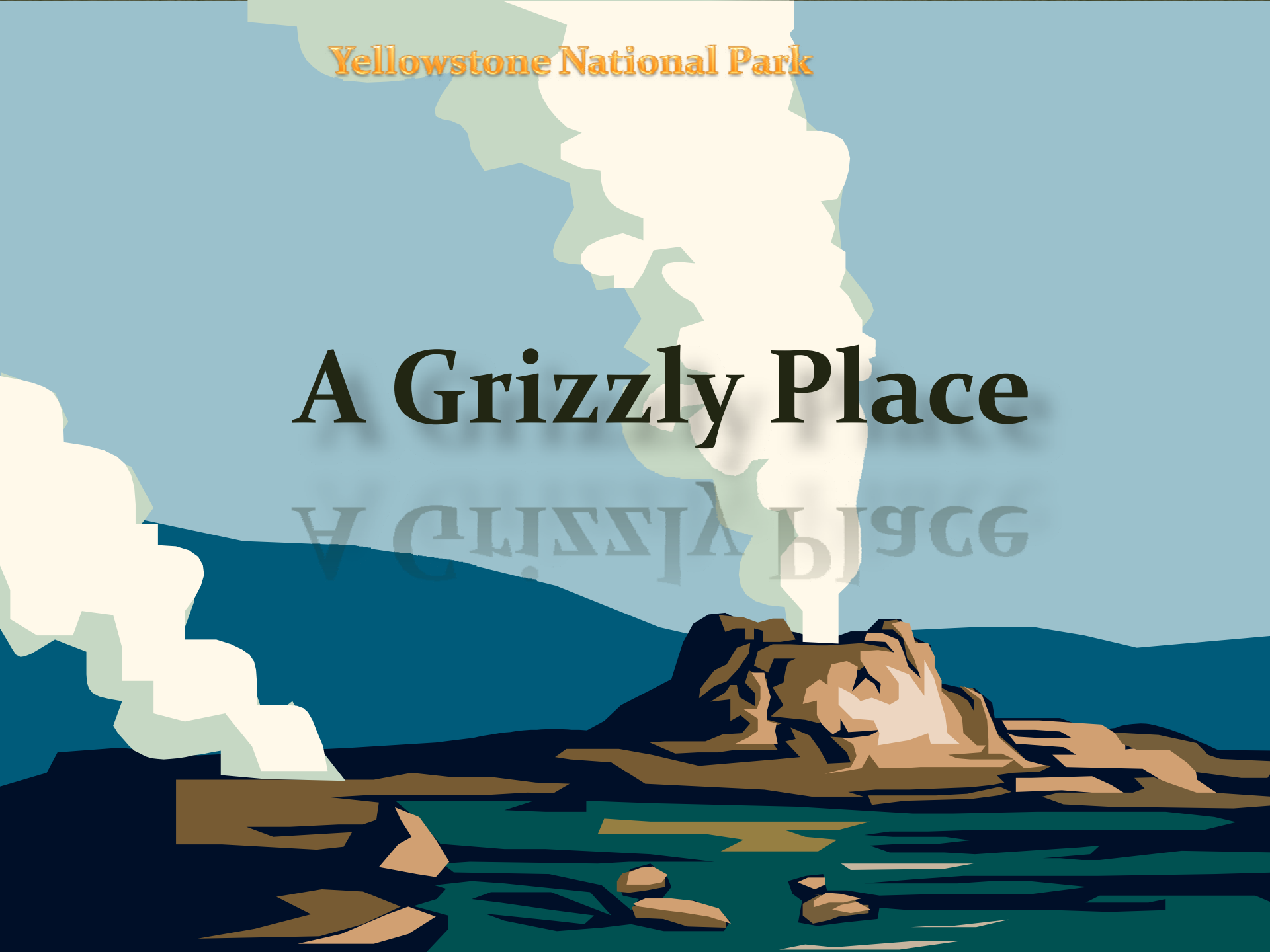


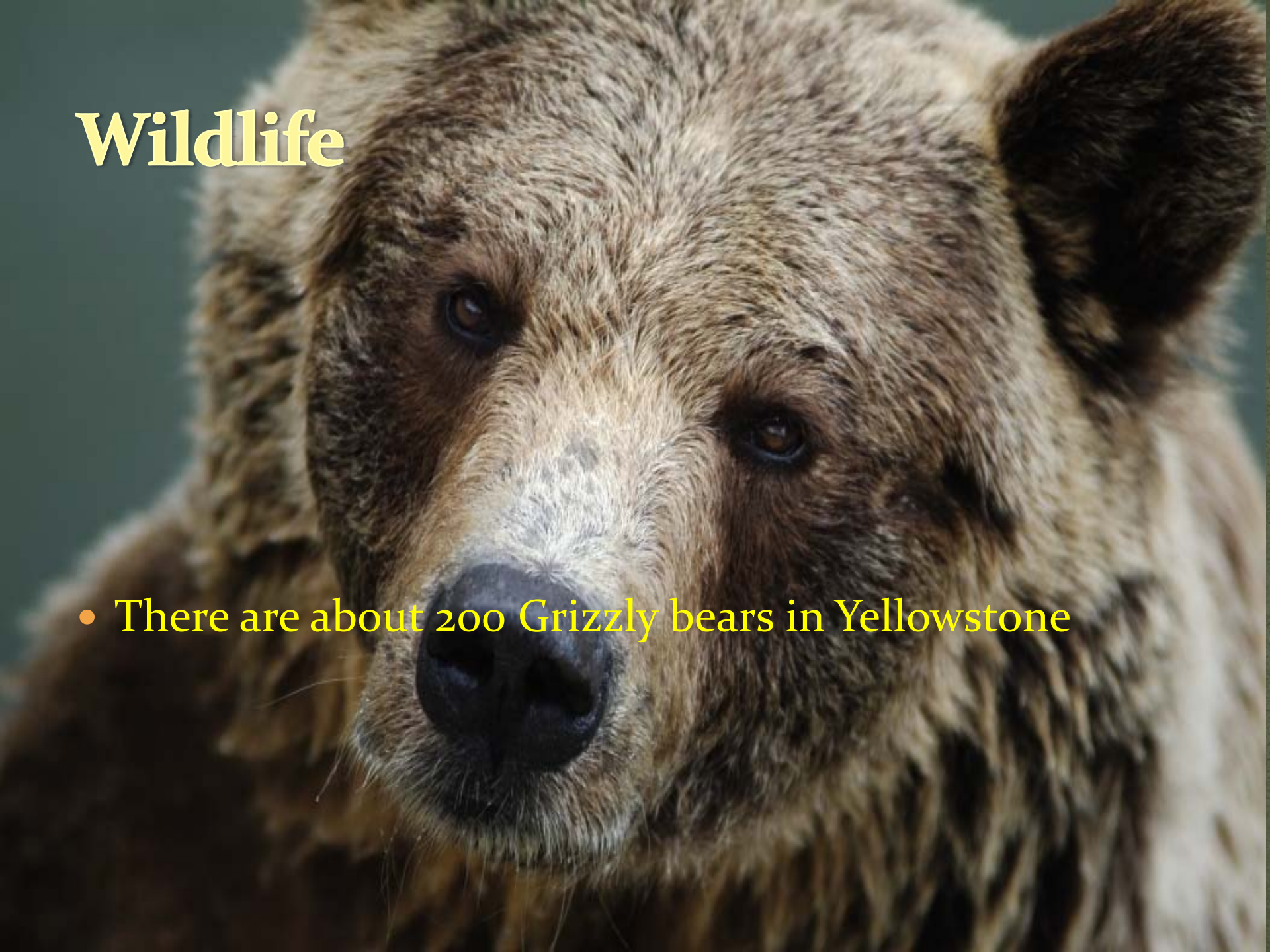
Yellowstone National Park

A Grizzly Place



Wildlife

- There are about 200 Grizzly bears in Yellowstone



Wildlife



1923 - 1998

No Wolves



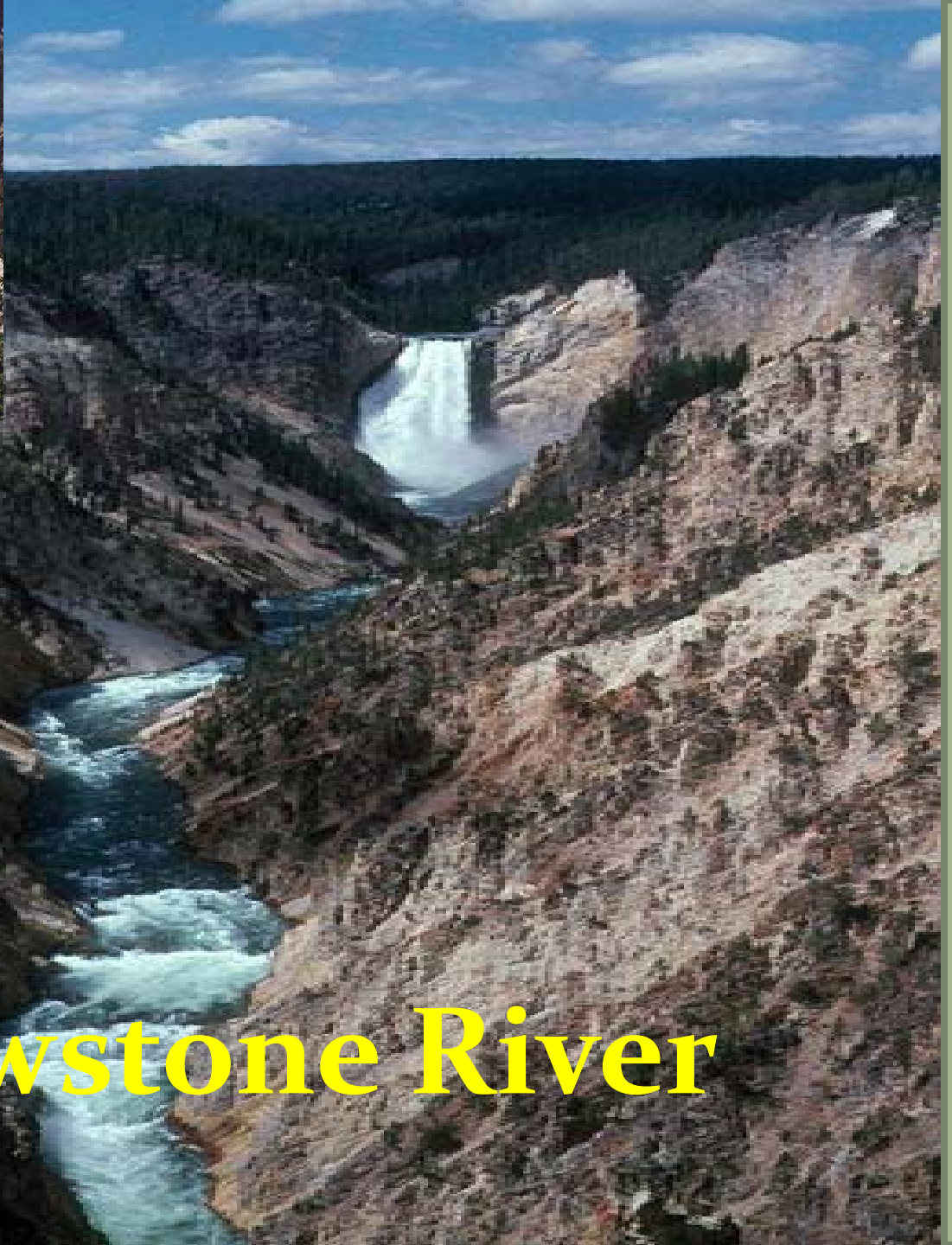
1998 - now

In 2000 there were 14 packs
and the numbers keep
growing

Landscape



In the fall the Aspen trees turn gold.



Yellowstone River

Landscape



Yellowstone is in the Rocky Mountains

Geothermal Areas



A fumaroles is a crack in the earth that lets out steam



Geysers are hot water that comes out of the Earth.
The difference between a geyser & a hot spring is that a hot spring is a pool of water or a river but a geyser is hot water inside the earth. When it gets too hot, it erupts.

Old Faithful





Mammoth Hot Springs

Geothermal areas



A mud pot is an area that is rich in volcanic ash and is heated by the inner earth

History of Yellowstone

- Established on the date March 1, 1872.
- First national park made in the U.S.A



History

The US Army use to run Yellowstone



The Native Americans use to live at Yellowstone





Activities

- Hiking
- Horseback riding
- Cross – Country Skiing
- Biking
- Boating & rafting
- Sight seeing
- Camping

Activities



3 million visitors visit Yellowstone a year



The End

By Alex and Elyssa